

12800
DPI

RGB

<说明书>



G6

机械鼠标

MACRO PROGRAMMING GAMING MOUSE

G6 RGB 宏定义 可编程游戏鼠标

规格:

1. 产品型号: G6 可编程游戏鼠标。
2. 100% 新的鼠标游戏。
3. 高端品牌机械宏定义游戏鼠标
4. 人体工程设计
5. 10个可编程按键
6. 灯效: 13种RGB灯效切换。
7. 6级DPI可调, 最大12800 DPI
8. 额定电压|电流: DC 5V /180mA
9. 回报率: 120/250/★500/1000Hz
10. 移动速度: 60inch/s
11. 刷新率: 7000FPS
12. 加速度: 20G
13. USB即插即用
14. 开关寿命: 2000万次
15. 电缆长度: 1.65m
16. 产品尺寸: 129*82*42 mm±2mm(L *W*H)
17. 支持Windows 2000 /XP 1 win71 win8 /win10 Vista 32bit IOS 或最新版本。
18. 装箱单:
1 X 游戏鼠标
1 X 用户手册

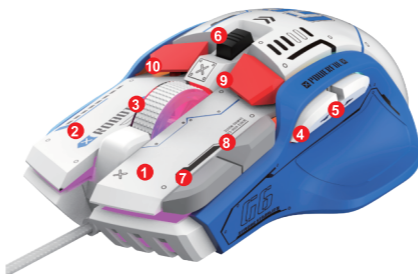
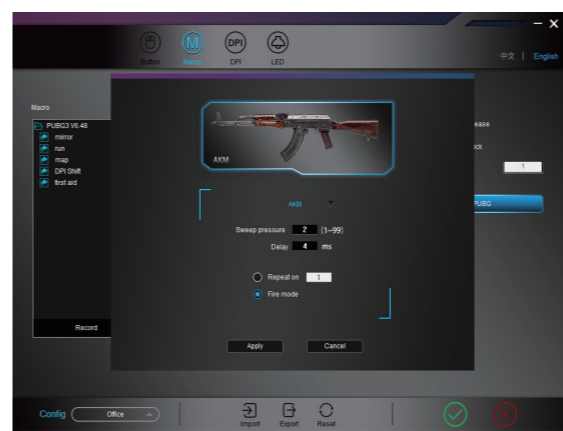
FC CE RoHS Made in China

G6 RGB 宏定义 可编程游戏鼠标



六档DPI值及对应颜色分别是:

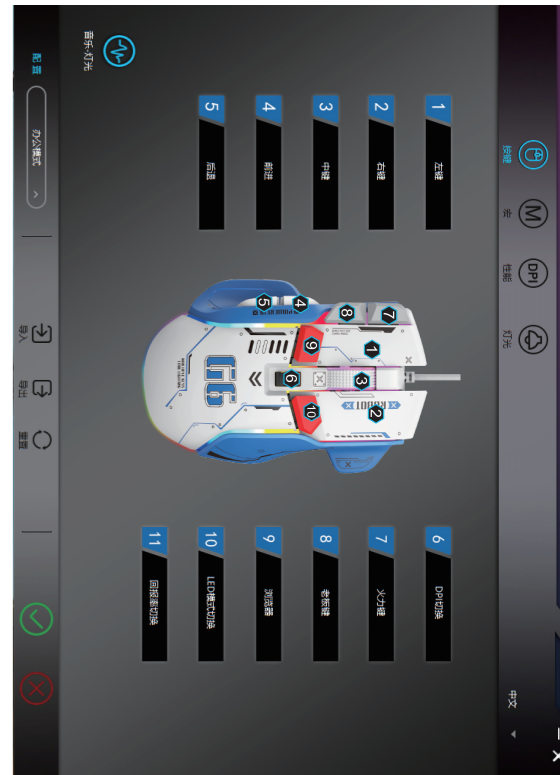
一档	二档	三档	四档	五档	六档
1200	1600	2400	6400	7200	12800
黄灯	蓝灯	粉灯	绿灯	红灯	青灯



- ①.左键
- ②.右键
- ③.中键
- ④.前进键
- ⑤.后退键
- ⑥.DPI 循环 +/-
- ⑦.火力键
- ⑧. BOSS键
- ⑨.一键网页
- ⑩.RGB灯效调节

如何使用: How to use:

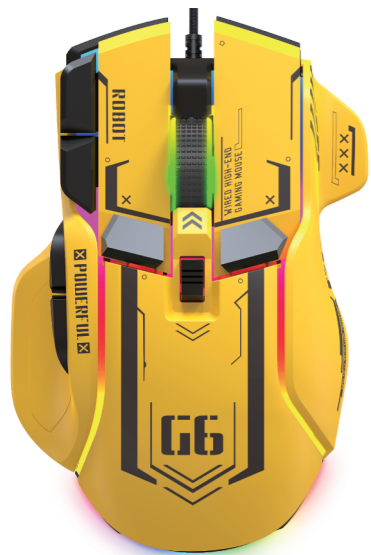
1. 通过卖家提供的网站下载宏编程软件。
2. 下载后直接打开, 使用按钮自定义编程。
3. 鼠标连接成功并正常使用后, 直接打开G6宏编程软件即可使用宏编程功能。
4. 采用A826 IC专业游戏芯片, 采用高性能程控解码芯片, 动作流畅, 控制精准。
5. 按键设置 对于1-10按键 (如图), 驱动支持自定义设置。
6. DPI设置: 默认
1200/1600/2400/6400/7200/12800 六段DPI值可以任意段。
7. 灯光模式: 13种RGB灯光模式切换。
8. 鼠标参数: 可以设置指针精度、滚轮速度和双击速度。
9. 自定义设置: 自定义宏编辑, 支持游戏效果。
10. 设置完成后, 单击应用程序, 然后单击保存配置。下次使用时应重新启动驱动程序, 以便可以使用所有自定义功能。



12800
DPI

RGB

<Instructions>



G6 机械鼠标
MACRO PROGRAMMING GAMING MOUSE

G6 RGB Macro definition programmable game mouse

SPECIFICATIONS:

1. Product model: G6 PROGRAMMABLE GAMING MOUSE.
2. 100% new mouse game.
3. High-end brand mechanical macro definition gaming mouse
4. Human body engineering design
5. 10 programmable keys
6. Light effect: 13 kinds RGB lighting mode switch.
7. 6-level adjustable DPI, Max. 12800 DPI
8. Voltage rating | electric current: DC 5V / 180mA
9. Return rate: 120/250/★500/1000Hz
10. Moving speed: 60inch/s
11. Refresh rate: 7000FPS
12. Acceleration: 20G
13. USB plug and play
14. Switch life: 20million cycle
15. Cable length: 1.65m
16. Item Size: 129*82*42 mm±2mm(L *W*H)
17. Support Windows 2000 /XP 1 win71 win8 /win10 Vista 32bit IOS or latest.
18. Packing list:
1 X gaming mouse
1 X User manual

FC CE RoHS Made in China

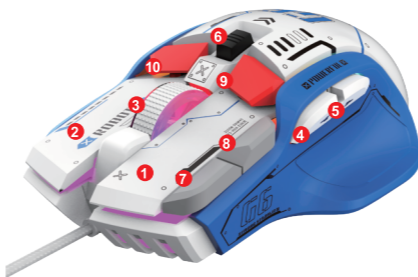
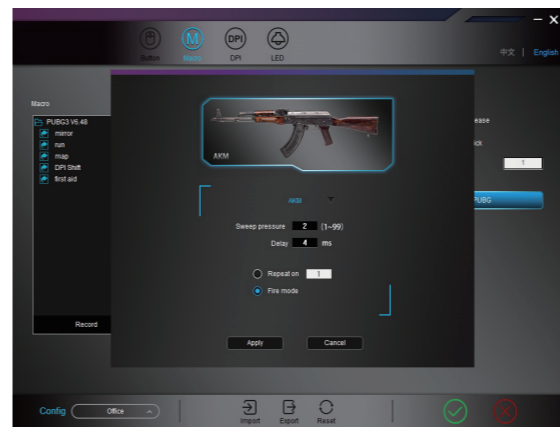
G6 RGB Macro definition programmable game mouse



DPI switching and sensor identification: SIX-speed DPI

First gear	Second gear	Third gear	Fourth gear	Five gears	Sixth gear
1200	1600	2400	6400	7200	12800
Yellow light	blue light	Purple light	Green light	Red light	cyan-blue light

G6 RGB Macro definition programmable game mouse



- ①. Left Button
- ②. Right Button
- ③. Mid Button
- ④. Forward
- ⑤. Backward
- ⑥. DPI Loop +/-
- ⑦. Fire
- ⑧. Show Desktop
- ⑨. Browser
- ⑩. LED Loop

How to use:

1. Download the macro programming software through the website provided by the seller.
2. After downloading, open it directly and use the buttons to customize programming.
3. When the mouse is successfully connected and used normally, Open the G6 macro programming software directly to use the macro programming function.
4. Adop A826 IC professional game chip, using high-performance program control decoder chip for smooth motion and precise control.
5. Button settings For the 1-10 button (as shown), the drive supports custom settings.
6. DPI setting: default 1200/1600/2400/6400/7200/12800 the Six-segment DPI value can be any section.
7. Light mode: 13 kinds RGB lighting mode switch.
8. Mouse parameters: You can set the pointer precision, wheel speed and double click speed.
9. Custom Settings: Custom macro editing that supports game effects.
10. When the settings are complete, click Applications and then click Save Configuration. You should start the driver again the next time you use it so that you can use all customizations Features.

